

Centre No.						Paper Reference	Surname	Initial(s)
Candidate No.						6 6 6 3 / 0 1	Signature	

Paper Reference(s)

6663/01

Edexcel GCE

Core Mathematics C1

Advanced Subsidiary

Tuesday 10 January 2006 – Afternoon

Time: 1 hour 30 minutes



Materials required for examination

Mathematical Formulae (Green)

Items included with question papers

Nil

Calculators may NOT be used in this examination.

Examiner's use only

--	--	--

Team Leader's use only

--	--	--

Question Number	Leave Blank
1	
2	
3	
4	
5	
6	
7	
8	
9	
10	
Total	

Instructions to Candidates

In the boxes above, write your centre number, candidate number, your surname, initial(s) and signature.

Check that you have the correct question paper.

You must write your answer for each question in the space following the question.

Information for Candidates

A booklet 'Mathematical Formulae and Statistical Tables' is provided.

Full marks may be obtained for answers to ALL questions.

The marks for individual questions and the parts of questions are shown in round brackets: e.g. (2).

There are 10 questions in this question paper. The total mark for this paper is 75.

There are 20 pages in this question paper. Any blank pages are indicated.

Advice to Candidates

You must ensure that your answers to parts of questions are clearly labelled.

You must show sufficient working to make your methods clear to the Examiner. Answers without working may gain no credit.

This publication may be reproduced only in accordance with Edexcel Limited copyright policy.
©2006 Edexcel Limited.

Printer's Log. No.

N20233A

W850/R6663/57570 7/3/3/3/45,000



Turn over

6.

Figure 1

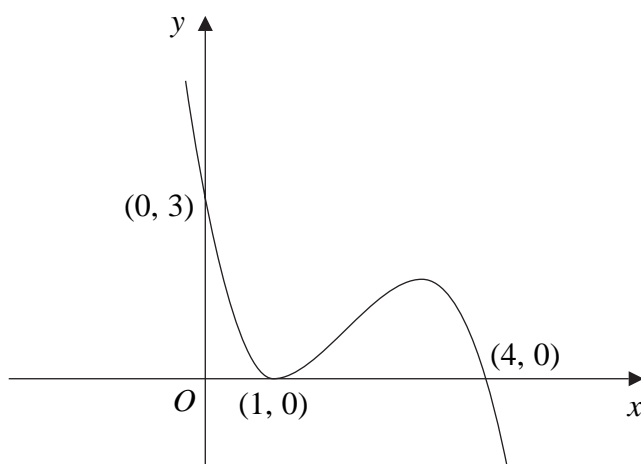


Figure 1 shows a sketch of the curve with equation $y = f(x)$. The curve passes through the points $(0, 3)$ and $(4, 0)$ and touches the x -axis at the point $(1, 0)$.

On separate diagrams sketch the curve with equation

(a) $y = f(x + 1)$, **(3)**

(b) $y = 2f(x)$, **(3)**

(c) $y = f\left(\frac{1}{2}x\right)$. **(3)**

On each diagram show clearly the coordinates of all the points where the curve meets the axes.



Leave
blank

Question 6 continued

Q6

(Total 9 marks)



7. On Alice's 11th birthday she started to receive an annual allowance. The first annual allowance was £500 and on each following birthday the allowance was increased by £200.

(a) Show that, immediately after her 12th birthday, the total of the allowances that Alice had received was £1200. (1)

(b) Find the amount of Alice's annual allowance on her 18th birthday. (2)

(c) Find the total of the allowances that Alice had received up to and including her 18th birthday. (3)

When the total of the allowances that Alice had received reached £32 000 the allowance stopped.

(d) Find how old Alice was when she received her last allowance. (7)



Question 7 continued

A series of horizontal lines for writing the answer to Question 7.

Q7

(Total 13 marks)

--	--



9.

Figure 2

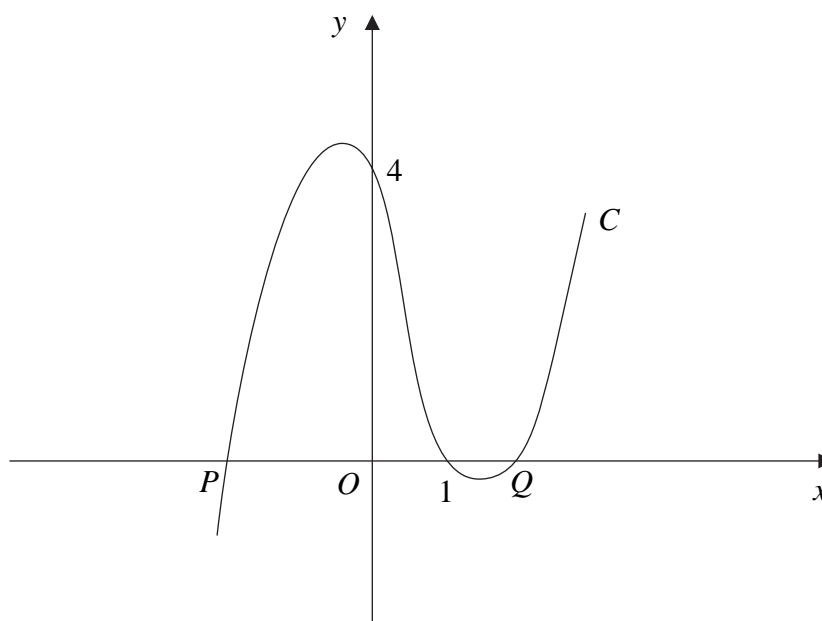


Figure 2 shows part of the curve C with equation

$$y = (x - 1)(x^2 - 4).$$

The curve cuts the x -axis at the points P , $(1, 0)$ and Q , as shown in Figure 2.

(a) Write down the x -coordinate of P , and the x -coordinate of Q . (2)

(b) Show that $\frac{dy}{dx} = 3x^2 - 2x - 4$. (3)

(c) Show that $y = x + 7$ is an equation of the tangent to C at the point $(-1, 6)$. (2)

The tangent to C at the point R is parallel to the tangent at the point $(-1, 6)$.

(d) Find the exact coordinates of R . (5)



Leave blank

Question 9 continued

Handwriting practice area with 30 horizontal lines.

Q9	
----	--

(Total 12 marks)



10.

$$x^2 + 2x + 3 \equiv (x + a)^2 + b.$$

- (a) Find the values of the constants a and b . (2)
- (b) In the space provided below, sketch the graph of $y = x^2 + 2x + 3$, indicating clearly the coordinates of any intersections with the coordinate axes. (3)
- (c) Find the value of the discriminant of $x^2 + 2x + 3$. Explain how the sign of the discriminant relates to your sketch in part (b). (2)

The equation $x^2 + kx + 3 = 0$, where k is a constant, has no real roots.

- (d) Find the set of possible values of k , giving your answer in surd form. (4)



